

Rectan
gular



Round
Compact



Lipstick
Pen



Bottles
Series



Jar
Series



www.singpen.com








SING PEN INTERNATIONAL TECHNOLOGY CO., LTD

www.singpen.com.tw

SING PEN TAIWAN CO., LTD.

Round Compact Series



number	page	number	page	number	page
CT002 	P3	P156 	P15	P215	P27
E429	P4	P157	P16	P228	P28
E430	P5	SP-C03	P17	P229	P29
P102	P6	SP-C06	P18	P230	P30
P103 	P7	E467	P19	P230A	P31
P107	P8	MK568	P20	P231	P32
P133	P9	E726A 	P21	P236	P33
P134	P10	P170	P22	P238	P34
P139	P11	P171	P23	P256	P35
P148 	P12	P200	P24	P267	P36
P150 	P13	P202	P25		
P155 	P14	P208	P26		



Overall Dimensions: Ø74.5*H13.0mm
Pan well Dimensions: Ø60.0*H5.2mm

- 適用於粉底、腮紅或眼影
Suitable for eye shadow, blush or foundation powder.
- PET 高透明度
Injection with high grade of transparency PET.
- PET 環保回收材質
PET which is ECO friendly recycling material.
- PET 塑膠釘 · 非傳統金屬釘
With PET pin, non-traditional metal pin.
- 全製程一站式服務
One stop production, easy to control quality.
- 後續加工：加鏡、電鍍、噴漆、燙印
Subsequent processing: adding mirror, painting, metallization, printing and hot stamping...

E429 round compact



- ✓ Suitable for eye shadow or blush.
- ✓ The hinge is hinge-pin and the closure system has an 'finger recess' design.
- ✓ The compacts can be molded in opaque or transparent materials.

Product number	Dimension	Material		Hinge breakage
		cover	base	push hinge area
E429	diameter 59.6 height 17.1	SAN/ABS	SAN/ABS	≥1.8kgf
	Pan well diameter 47.1 height 4 (capacity appr.6.5ml)			

E430 round compact



- ✓ Suitable for eye shadow or blush.
- ✓ The hinge is hinge-pin and the closure system has an 'finger recess' design.
- ✓ The compacts can be molded in opaque or transparent materials.

Product number	Dimension	Material		Hinge breakage
		cover	base	push hinge area
E430	diameter 50.12 height 16.8	SAN/ABS	SAN/ABS	≥1.8kgf
	Pan well diameter 36.42 height 3.5 (capacity appr.3.5ml)			

P102 compact



- ✓ It is suitable for eye shadow or lip-cream.
- ✓ The hinge is hinge-pin and the closure system has an 'finger recess' design.

Product number	Dimension	Material			Hinge breakage
		cover	insert	base	push hinge area
P102	diameter 76 height 17.8	SAN+ABS	SAN+ABS	SAN+ABS	≥1.8kgf
	Pan well diameter 20.55 height 4.6 (appr.1.4ml per pan well)				

P103 compact



- ✓ It is suitable for eye shadow or lip-cream.
- ✓ The hinge is hinge-pin and the closure system has an 'finger recess' design.

Product number	Dimension	Material			Hinge breakage
		cover	insert	base	push hinge area
P103	diameter 76 height 17.8	SAN+ABS	SAN+ABS	SAN+ABS	≥1.8kgf
	Pan well diameter 59.15 height 5 (appr.13ml)				

P107 compact



- ✓ It is suitable for foundation powder or blush.
- ✓ The hinge is hinge-pin and the closure system has an 'finger recess' design.

Product number	Dimension	Material			Hinge breakage
		cover	insert	base	push hinge area
P107	diameter 67.8 height 23.2	SAN+ABS	SAN+ABS	SAN+ABS	≥1.8kgf
	Pan well diameter 55.4 height 5.8 (appr.13ml)				

P133 round compact



- ✓ It is suitable for eye shadow, blush or foundation powder.
- ✓ The hinge is hinge-pin and the closure system has an 'finger recess' design.
- ✓ The compacts can be molded in opaque or transparent materials.

Product number	Dimension	Material		Hinge breakage
		cover	base	push hinge area
P133	diameter 73.8 height 12.8	SAN/ABS	SAN/ABS	≥1.8kgf
	Pan well diameter 59.1 height 5 (capacity appr.13.7ml)			

P134 round compact



- ✓ It is suitable for eye shadow, blush or foundation powder.
- ✓ The hinge is hinge-pin and the closure system has an 'finger recess' design.
- ✓ The compacts can be molded in opaque or transparent materials.

Product number	Dimension	Material		Hinge breakage
		cover	base	push hinge area
P134	diameter 73.8 height 12.8	SAN/ABS	SAN/ABS	≥1.8kgf
	Pan well diameter 59.7 height 5 (capacity appr.13.9ml)			

P139 round compact



- ✓ It is suitable for eye shadow, blush or foundation powder.
- ✓ The hinge is hinge-pin and the closure system has an 'finger recess' design.
- ✓ The compacts can be molded in opaque or transparent materials.

Product number	Dimension	Material		Hinge breakage
		cover	base	push hinge area
P139	diameter 50 height 15.7	SAN/ABS	SAN/ABS	≥1.8kgf
	Pan well diameter 33.2 height 4.7 (capacity appr.4ml)			

P148 round compact



- ✓ It is suitable for eye shadow, blush or foundation powder.
- ✓ The hinge is hinge-pin and the closure system has an 'finger recess' design.
- ✓ The compacts can be molded in opaque or transparent materials.

Product number	Dimension	Material		Hinge breakage
		cover	base	push hinge area
P148	diameter 50 height 15.7	SAN/ABS	SAN/ABS	≥1.8kgf
	Pan well diameter 36.3 height 4.6 (capacity appr.4.5ml)			

P150 round compact



- ✓ It is suitable for eye shadow, blush or foundation powder.
- ✓ The hinge is hinge-pin and the closure system has an 'finger recess' design.
- ✓ The compacts can be molded in opaque or transparent materials.

Product number	Dimension	Material		Hinge breakage
		cover	base	push hinge area
P150	diameter 50 height 12.1	SAN/ABS	SAN/ABS	≥1.8kgf
	Pan well diameter 36.7 height 4.6 (capacity appr.4.5ml)			

P155 round compact



- ✓ It is suitable for eye shadow, blush or foundation powder.
- ✓ The hinge is hinge-pin and the closure system has an 'finger recess' design.
- ✓ The compacts can be molded in opaque or transparent materials.

Product number	Dimension	Material		Hinge breakage
		cover	base	push hinge area
P155	diameter 50 height 15.7	SAN/ABS	SAN/ABS	≥1.8kgf
	Pan well diameter 36.7 height 4.6 (capacity appr.4.5ml)			

P156 compact



- ✓ It is suitable for eye shadow or blush.

Product number	Dimension	Material	
		compact	
P156	diameter 22.6 height 14.7	PP	
	Pan well diameter 16.8 height 4.5 (appr.0.9ml)		

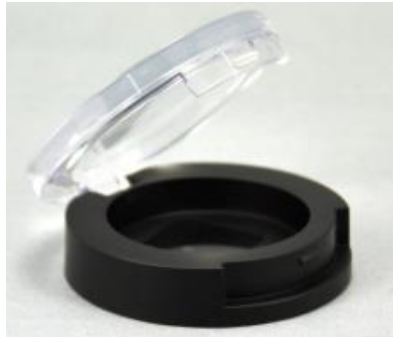
P157 compact



- ✓ It is suitable for foundation powder or blush.
- ✓ The hinge is hinge-pin and the closure system has an 'finger recess' design.

Product number	Dimension	Material			Hinge breakage
		cover	insert	base	push hinge area
P157	diameter 73.5 height 20.4	SAN/ABS	SAN/ABS	SAN/ABS	≥1.8kgf
	Pan well diameter 59.4 height 5.2				

SP-C03 round compact



- ✓ It is suitable for eye shadow, blush.
- ✓ The hinge is hinge-pin and the closure system has an 'finger recess' design.
- ✓ The compacts can be molded in opaque or transparent materials.
- ✓ The compacts can be supplied with, or without mirror in the lids.

Product number	Dimension	Material		Hinge breakage
		cover	base	push hinge area
SP-C03	diameter 43.5 height 14.7	ABS	ABS	≥1.8kgf
	Pan well 30.7 x 5.9 (appr. 4ml)			

SP-C06 round compact



- ✓ It is suitable for eye shadow, blush.
- ✓ The hinge is hinge-pin and the closure system has an 'finger recess' design.
- ✓ The compacts can be molded in opaque or transparent materials.
- ✓ The compacts can be supplied with, or without mirror in the lids.

Product number	Dimension	Material		Hinge breakage
		cover	base	push hinge area
SP-C03	diameter 43.5 height 14.8	PS	PS/ABS	≥1.8kgf
	Pan well 30.6 x 3.5 (appr. 2.5ml)			

E467 round compact



- ✓ It is suitable for eye shadow powder.
- ✓ The hinge is hinge-pin and the closure system has an 'finger recess' design.

Product number	Dimension	Material			Hinge breakage
		cover	insert	base	push hinge area
E467	diameter 76 height 20.8	SAN/ SAN+ABS	SAN+ABS	SAN+ABS	≥1.8kgf
	Pan well diameter 20.2 height 3.7 (capacity appr.1.1ml per pan well)				

MK568 round compact



- ✓ It is suitable for foundation powder.
- ✓ The hinge is hinge-pin and the closure system has an 'finger recess' design.

Product number	Dimension	Material			Hinge breakage
		cover	window	base	push hinge area
MK568	diameter 100.78 height 10.07	SAN+ABS	SAN	SAN+ABS	≥1.8kgf
	Pan well diameter 90.75 height 5.52 (capacity appr.35ml)				

E726A round compact



- ✓ It is suitable for foundation powder.
- ✓ The hinge is hinge-pin and the closure system has an 'finger recess' design.

Product number	Dimension	Material			Hinge breakage
		cover	window	base	push hinge area
E726A	diameter 67.38 height 13.9	SAN	SAN+ABS	SAN+ABS	≥1.8kgf
	Pan well diameter 56.56 height 6.6 (capacity appr.16ml)				

P170 round compact



- ✓ It is suitable for foundation powder or blush and eye shadow.
- ✓ The hinge is hinge-pin and the closure system has an 'Magnetic system' design.

Product number	Dimension	Material						Hinge breakage
		Out cover	Inner cover	Mirror	magnet	insert	base	push hinge area
P170	diameter 53 height 52.6	SAN+ABS	SAN+ABS	glass	2pcs	SAN+ABS	SAN+ABS	≥1.8kgf
	Pan well diameter 36.8 height 5.5 (capacity appr.5.5ml)							

P171 round compact



- ✓ It is suitable for foundation powder or blush and eye shadow.
- ✓ The hinge is hinge-pin and the closure system has an 'Magnetic system' design.

Product number	Dimension	Material						Hinge breakage
		Out cover	Inner cover	Mirror	magnet	insert	base	push hinge area
P171	diameter 78 height 76.1	SAN+ABS	SAN+ABS	glass	2pcs	SAN+ABS	SAN+ABS	≥1.8kgf
	Pan well diameter 59 height 5 (capacity appr.13ml)							

P200 round compact



- ✓ It is suitable for foundation powder or blush and eye shadow.
- ✓ The hinge is hinge-pin and the closure system has an 'Magnetic system' design.

Product number	Dimension	Material					
		cover	Inner-cover	Inner-base	Base	Magnet	Mirror
P200	diameter 75 height 14.4	ABS	ABS	ABS	ABS	iron	glass
	Pan well diameter 59 height 5.2 (capacity appr.14.3ml)						

P202 round compact



- ✓ It is suitable for foundation powder or blush and eye shadow.
- ✓ The hinge is hinge-pin and the closure system has an 'Magnetic system' design.

Product number	Dimension	Material					
		cover	Inner-cover	Inner-base	Base	Magnet	Mirror
P202	diameter 59 height 14.2	ABS	ABS	ABS	ABS	iron	glass
	Pan well diameter 42.3 height 5 (capacity appr.6.8ml)						

P208 round compact



- ✓ P200 extended model with double mirror(without new tooling).
- ✓ The hinge is hinge-pin and the closure system has an 'Magnetic system' design

Product number	Dimension	Material			
		cover	Inner-cover	Inner-Base	Base
P208	diameter 75 height 14.4	ABS	ABS	ABS	ABS
	Pan well diameter 75 height 5 (capacity appr.13.6ml)				

P215 round compact



- ✓ It is suitable for foundation powder or blush and eye shadow.
- ✓ The hinge is hinge-pin and the closure system has an 'finger recess' design.

Product number	Dimension	Material		
		cover	Base	Mirror
P215	diameter \varnothing 49.9 height 12.1	ABS	ABS	Glass
	Pan well Dimensions 36.3*4.6mm (appr. 4.5ml)			

P228 round compact



- ✓ It is suitable for foundation powder or blush and eye shadow.
- ✓ The hinge is hinge-pin and the closure system has an 'finger recess' design.

Product number	Dimension	Material				
		cover	Insert	magnet	Base	Mirror
P228	diameter 66.94 height 12.0	ABS	ABS	Iron	ABS	glass
	Pan well 19.1*19.1*4.0mm (appr. 4*1.4ml per pan well)					

P229 round compact



- ✓ It is suitable for foundation powder or blush and eye shadow.
- ✓ The hinge is hinge-pin and the closure system has an 'finger recess' design.

Product number	Dimension	Material				
		cover	Insert	Magnet	Base	Mirror
P229	diameter 70.56*55.73 height 12.0	ABS	ABS	iron	ABS	glass
	Pan well 48.74.1*37.09*4.0mm (appr. 5.5ml per pan well)					

P230 round compact



- ✓ It is suitable for foundation powder or blush and eye shadow.
- ✓ The hinge is hinge-pin and the closure system has an 'finger recess' design.

Product number	Dimension	Material		
		cover	Insert	Base
P230	diameter 76 height 14.8	ABS	ABS	ABS
	Pan well Dimensions 20.2*3.7mm (appr. 4*1.1ml per pan well) 34.6*8*3.7 mm(appr. 1.0ml)			

P230A round compact



- ✓ It is suitable for foundation powder or blush and eye shadow.
- ✓ The hinge is hinge-pin and the closure system has an 'finger recess' design.

Product number	Dimension	Material		
		cover	Insert	Base
P230A	diameter 76 height 14.8	ABS	ABS	ABS
	Pan well Dimensions 20.2*3.7mm (appr. 4*1.1ml per pan well) 34.6*8*3.7 mm(appr. 1.0ml)			

P231 round compact



- ✓ It is suitable for foundation powder or blush and eye shadow.
- ✓ The hinge is hinge-pin and the closure system has an 'Magnetic system' design.

Product number	Dimension	Material				
		Top	cover	mirror	Magnet	Base
P231	diameter 73.85 height 17.55	ABS	ABS	Glass	Iron	ABS
	Pan well Dimensions 59.1*5.95mm (appr. 16.2.0ml)					

P236 round compact



- ✓ It is suitable for foundation powder or blush and eye shadow.
- ✓ The hinge is hinge-pin and the closure system has an 'Magnetic system' design.

Product number	Dimension	Material				
		Top	cover	mirror	Magnet	Base
P236	diameter 73.85 height 17.55	ABS	ABS	Glass	Iron	ABS
	Pan well Dimensions 59.1*5.95mm (appr. 16.2.0ml)					

P238 round compact



- ✓ It is suitable for foundation powder or blush and eye shadow.
- ✓ The hinge is hinge-pin and the closure system has an 'finger recess' design.

Product number	Dimension	Material	
		cover	Base
P238	diameter 64.5 height 18.9	ABS	ABS
	Pan well Dimensions 48.0*5.4mm (appr. 9.6ml)		

P256 round compact



- ✓ It is suitable for foundation powder or blush and eye shadow.
- ✓ The hinge is hinge-pin and the closure system has an 'Magnetic system' design

Product number	Dimension	Material						
		Out-cover	Inner-cover	magnet	middle	insets	base	Mirror
P256	diameter \varnothing 79.25 height 20.3	ABS	ABS	---	ABS	ABS	ABS	GLASS
	Pan well Dimensions \varnothing 59.0*5.0mm (appr. 13.6ml)							

P267 round compact



- ✓ It is suitable for foundation powder or blush and eye shadow.
- ✓ The hinge is hinge-pin and the closure system has an 'finger recess' design.

Product number	Dimension	Material			
		Top	Cover	Mirror	Base
P267	diameter \varnothing 73.85 height 15.9	AS	ABS	Glass	ABS
	Pan well Dimensions \varnothing 59.1*5.0mm (appr. 13.6ml)				